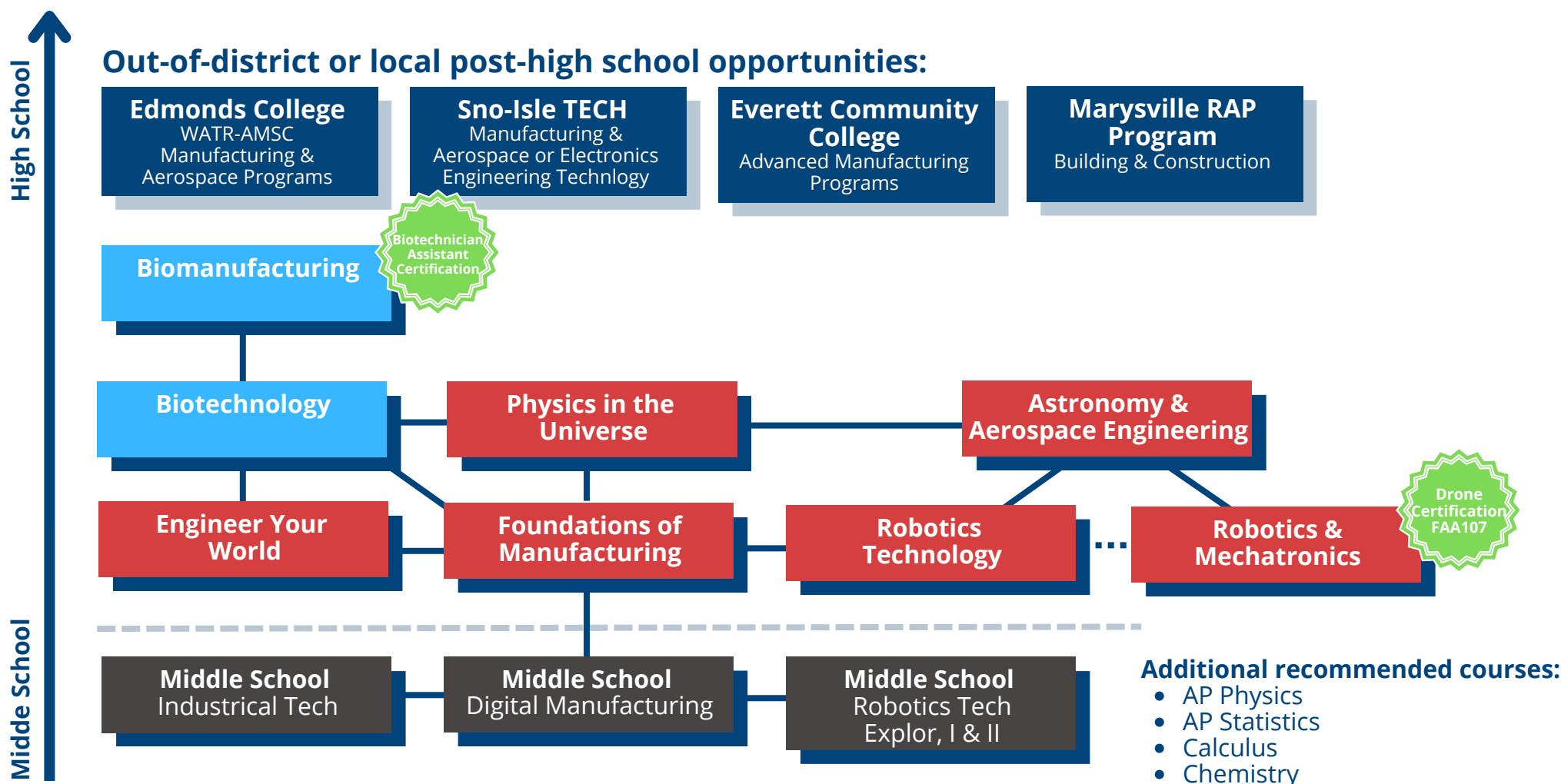


Career Connection **Advanced Manufacturing**

Contains Courses from multiple CTE Pathways

In your High School & Beyond Plan, if you have selected a CTE graduation pathway, you must earn 2.0 credits in that pathway, which meets CTE math and ELA graduation requirements. Pathways are color coded; key is located at the bottom.



CTE Graduation Pathways Color Code

■ Skilled & Technical Sciences

■ Family & Consumer Sciences

■ Agriculture Education & Science

■ Health Sciences

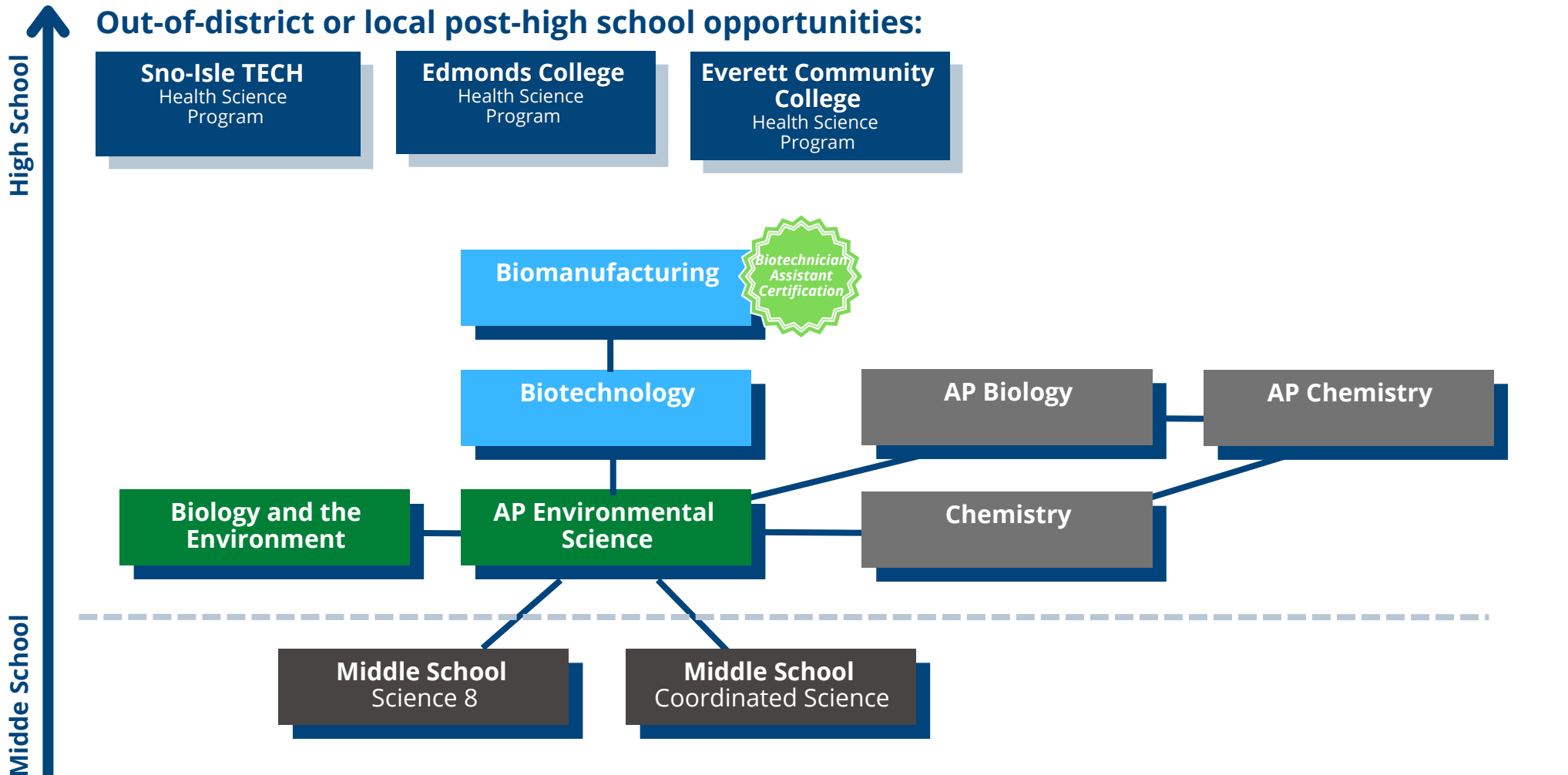
■ Business & Marketing

■ STEM

Career Connection Roadmap **Biotechnology**

Contains Courses from multiple CTE Pathways

In your High School & Beyond Plan, if you have selected a CTE graduation pathway, you must earn 2.0 credits in that pathway, which meets CTE math and ELA graduation requirements. Pathways are color coded; key is located at the bottom.



CTE Graduation Pathways Color Code

| | | | | | | |
|---|--|--|--|--|--|---|
| ■ Skilled & Technical Sciences | ■ Family & Consumer Sciences | ■ Agriculture Education & Science | ■ Health Sciences | ■ Business & Marketing | ■ STEM | ■ Not CTE |
|---|--|--|--|--|--|---|

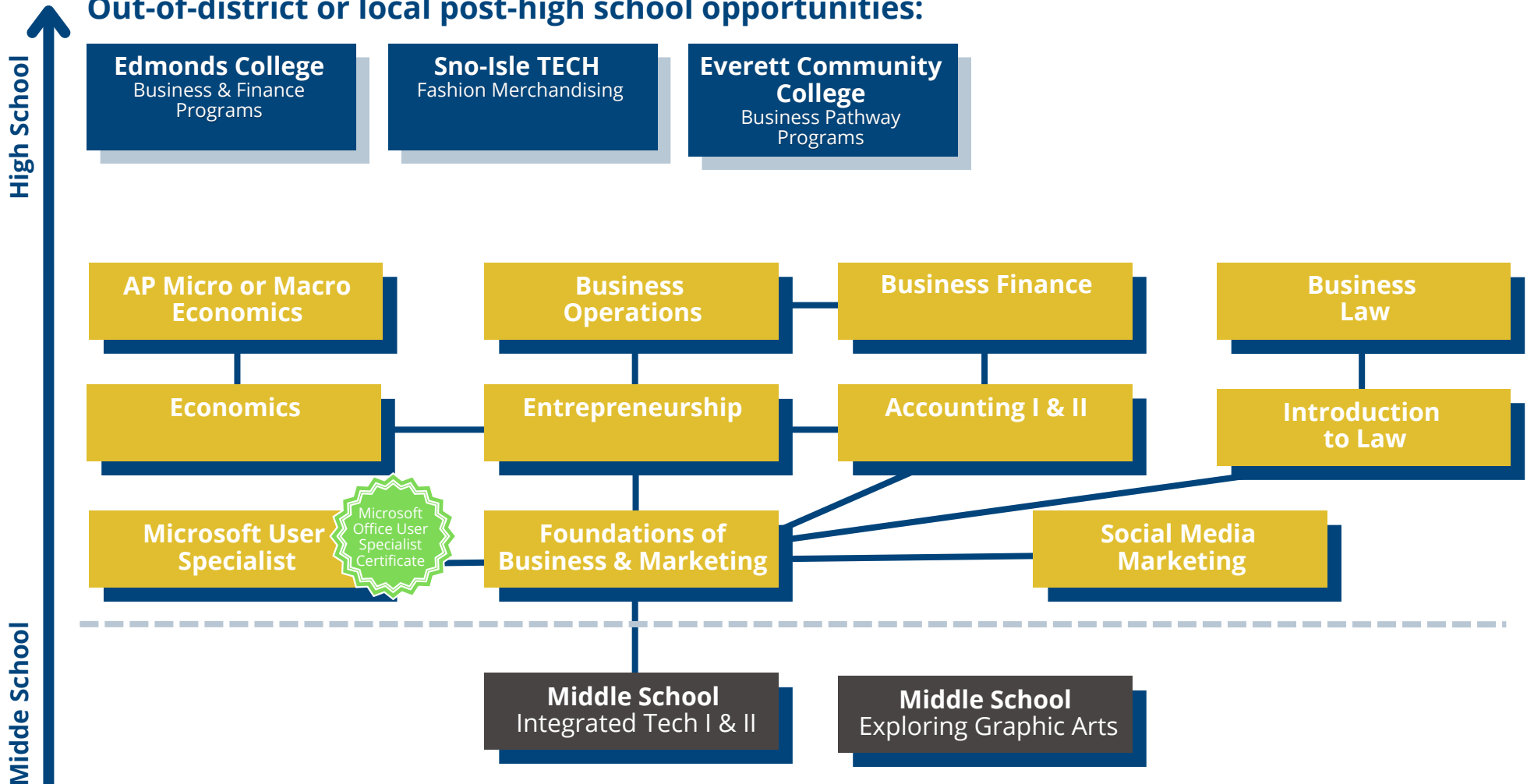
Everett Public Schools does not discriminate in any programs or activities on the basis of sex, race, creed, religion, color, national origin, age, veteran or military status, sexual orientation, gender expression or identity, disability, or the use of a trained dog guide or service animal and provides equal access to the Boy Scouts and other designated youth groups. The following employees have been designated to handle questions and complaints of alleged discrimination: Title IX/Civil Rights Compliance Officer: Kevin Allen, 425-385-4100, KAllen@everettsd.org, PO Box 2098, Everett WA 98213 Section 504 Coordinator: Dave Peters, 425-385-4063, DPeters@everettsd.org, PO Box 2098, Everett WA 98213 ADA Coordinator: Randi Seaberg, 425-385-4104, RSeaberg@everettsd.org, PO Box 2098, Everett WA 98213

Career Connection Business & Entrepreneurship

Contains Courses from the Business & Professional Services Roadmap

In your High School & Beyond Plan, if you have selected a CTE graduation pathway, you must earn 2.0 credits in that pathway, which meets CTE math and ELA graduation requirements. Pathways are color coded; key is located at the bottom.

Out-of-district or local post-high school opportunities:



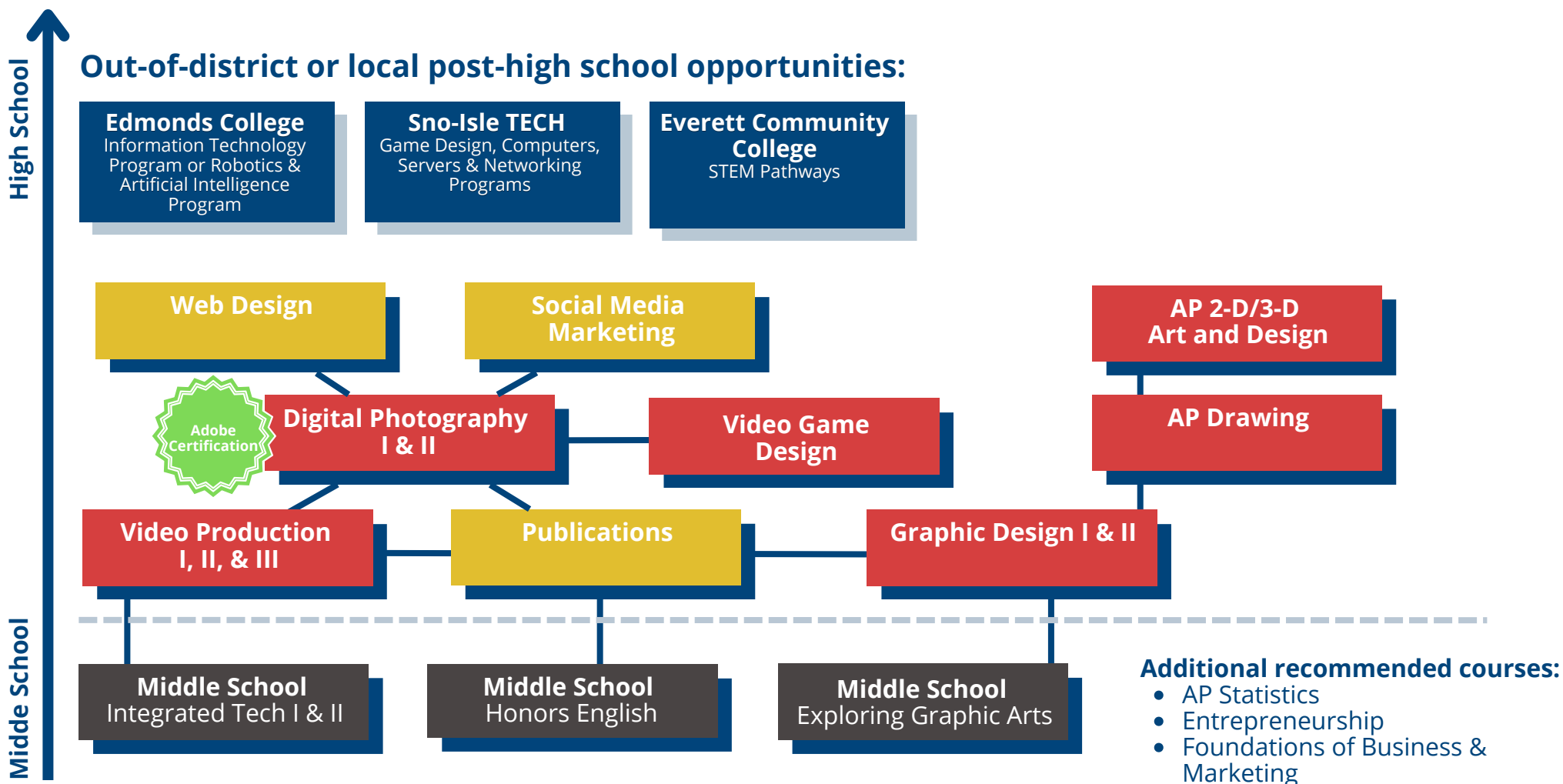
CTE Graduation Pathways Color Code



Career Connection Digital Communication

Contains Courses from multiple CTE Pathways

In your High School & Beyond Plan, if you have selected a CTE graduation pathway, you must earn 2.0 credits in that pathway, which meets CTE math and ELA graduation requirements. Pathways are color coded; key is located at the bottom.



CTE Graduation Pathways Color Code

■ Skilled & Technical Sciences

■ Family & Consumer Sciences

■ Agriculture Education & Science

■ Health Sciences

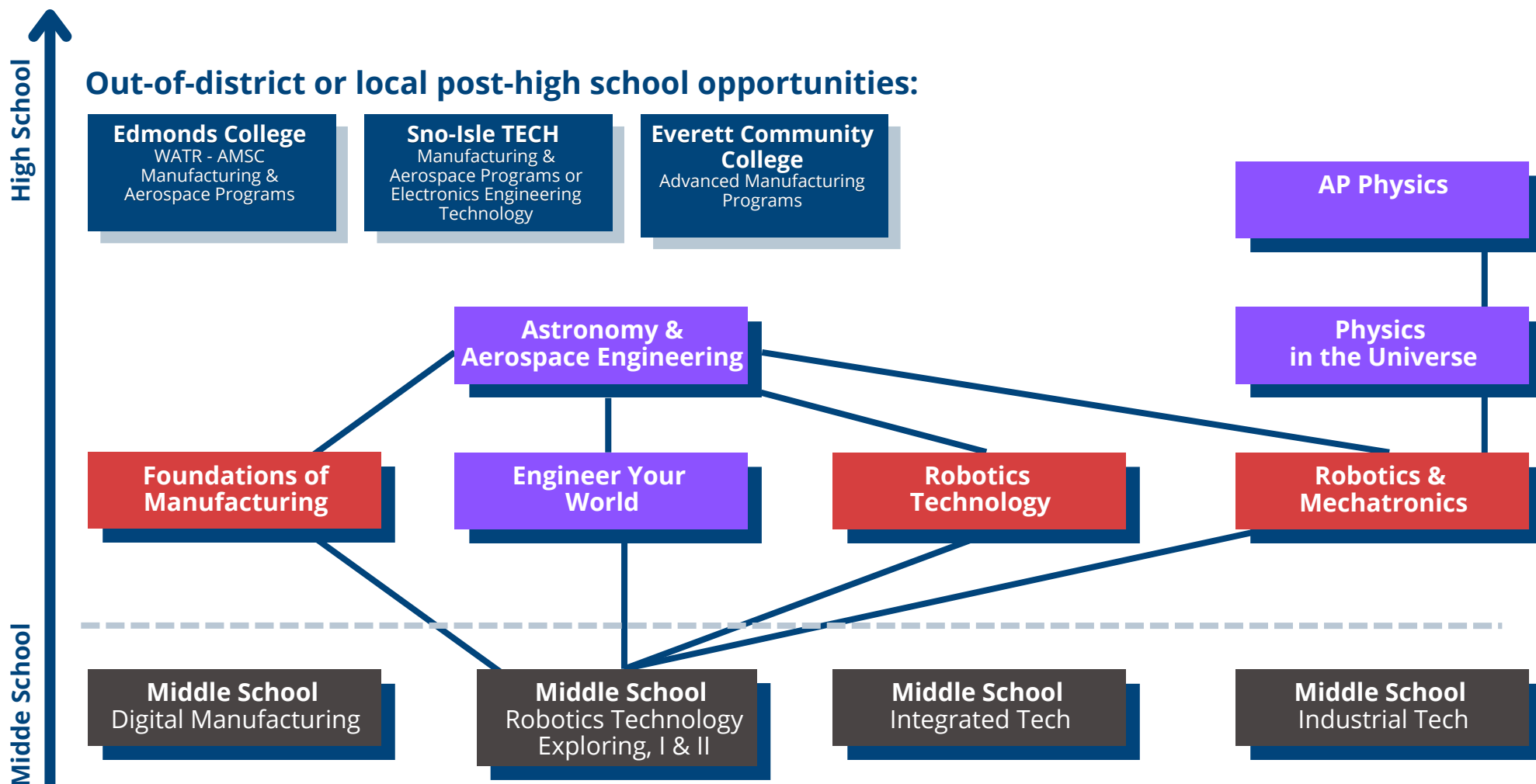
■ Business & Marketing

■ STEM

Career Connection Engineering & Aerospace

Contains Courses from multiple CTE Pathways

In your High School & Beyond Plan, if you have selected a CTE graduation pathway, you must earn 2.0 credits in that pathway, which meets CTE math and ELA graduation requirements. Pathways are color coded; key is located at the bottom.



CTE Graduation Pathways Color Code

■ Skilled & Technical Sciences

■ Family & Consumer Sciences

■ Agriculture Education & Science

■ Health Sciences

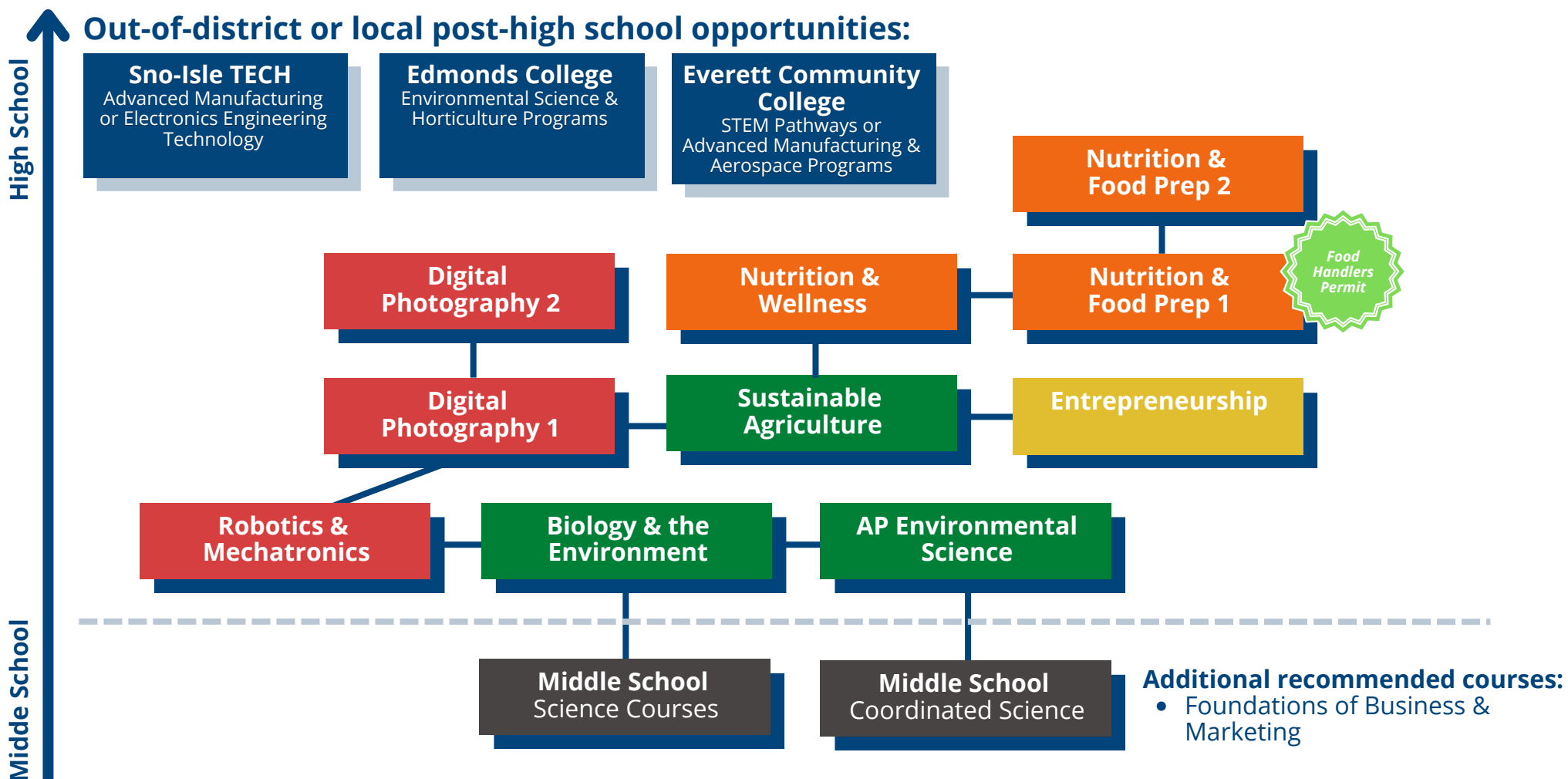
■ Business & Marketing

■ STEM

Career Connection Farm To Table

Contains Courses from multiple CTE Pathways

In your High School & Beyond Plan, if you have selected a CTE graduation pathway, you must earn 2.0 credits in that pathway, which meets CTE math and ELA graduation requirements. Pathways are color coded; key is located at the bottom.



CTE Graduation Pathways Color Code

■ Skilled & Technical Sciences

■ Family & Consumer Sciences

■ Agriculture Education & Science

■ Health Sciences

■ Business & Marketing

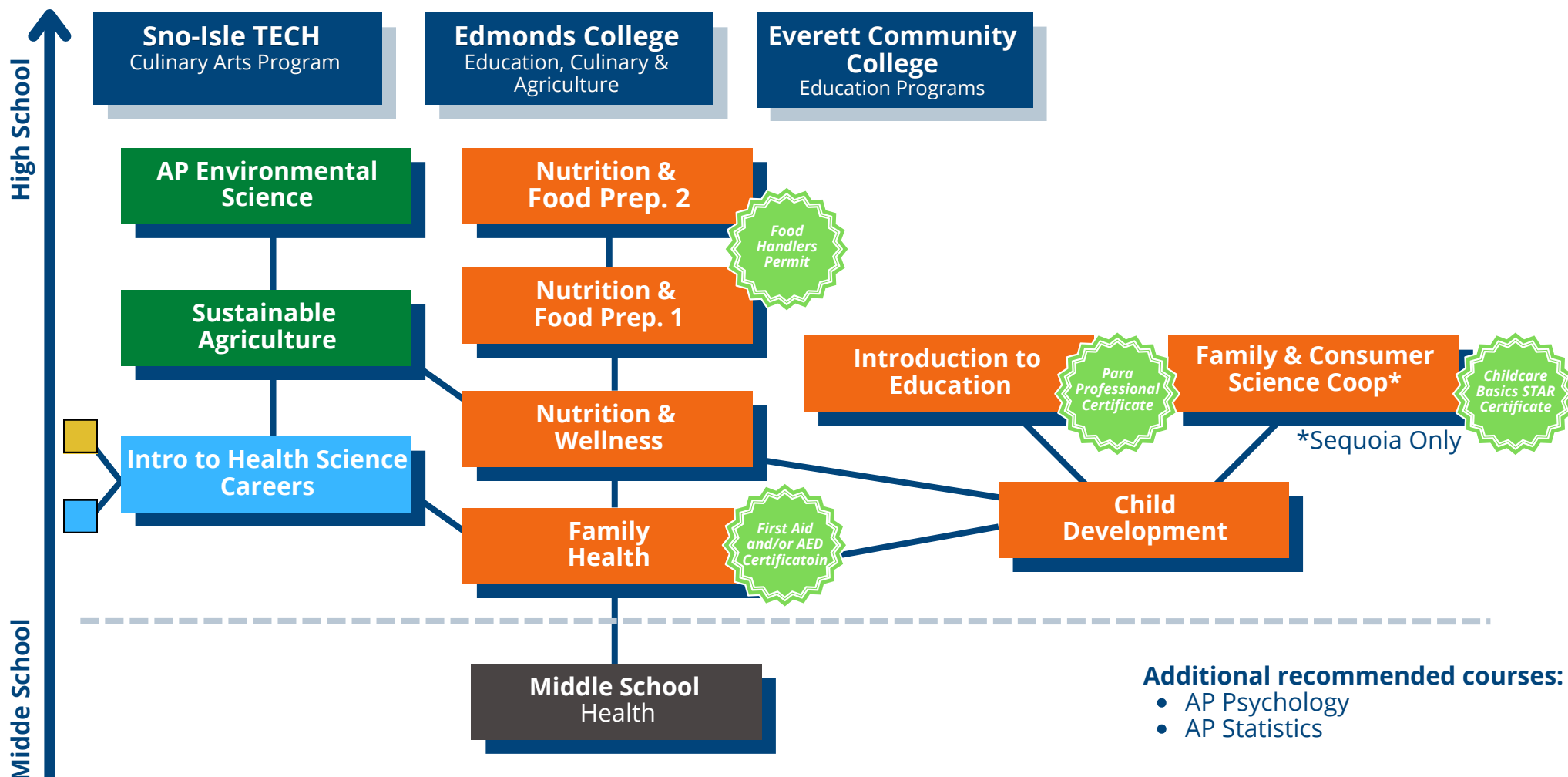
■ STEM

Career Connection Roadmap Health & Wellness

Contains Courses from multiple CTE Roadmaps

In your High School & Beyond Plan, if you have selected a CTE graduation pathway, you must earn 2.0 credits in that pathway, which meets CTE math and ELA graduation requirements. Pathways are color coded; key is located at the bottom.

Out-of-district or local post-high school opportunities:



CTE Graduation Pathways Color Code

■ Skilled & Technical Sciences

■ Family & Consumer Sciences

■ Agriculture Education & Science

■ Health Sciences

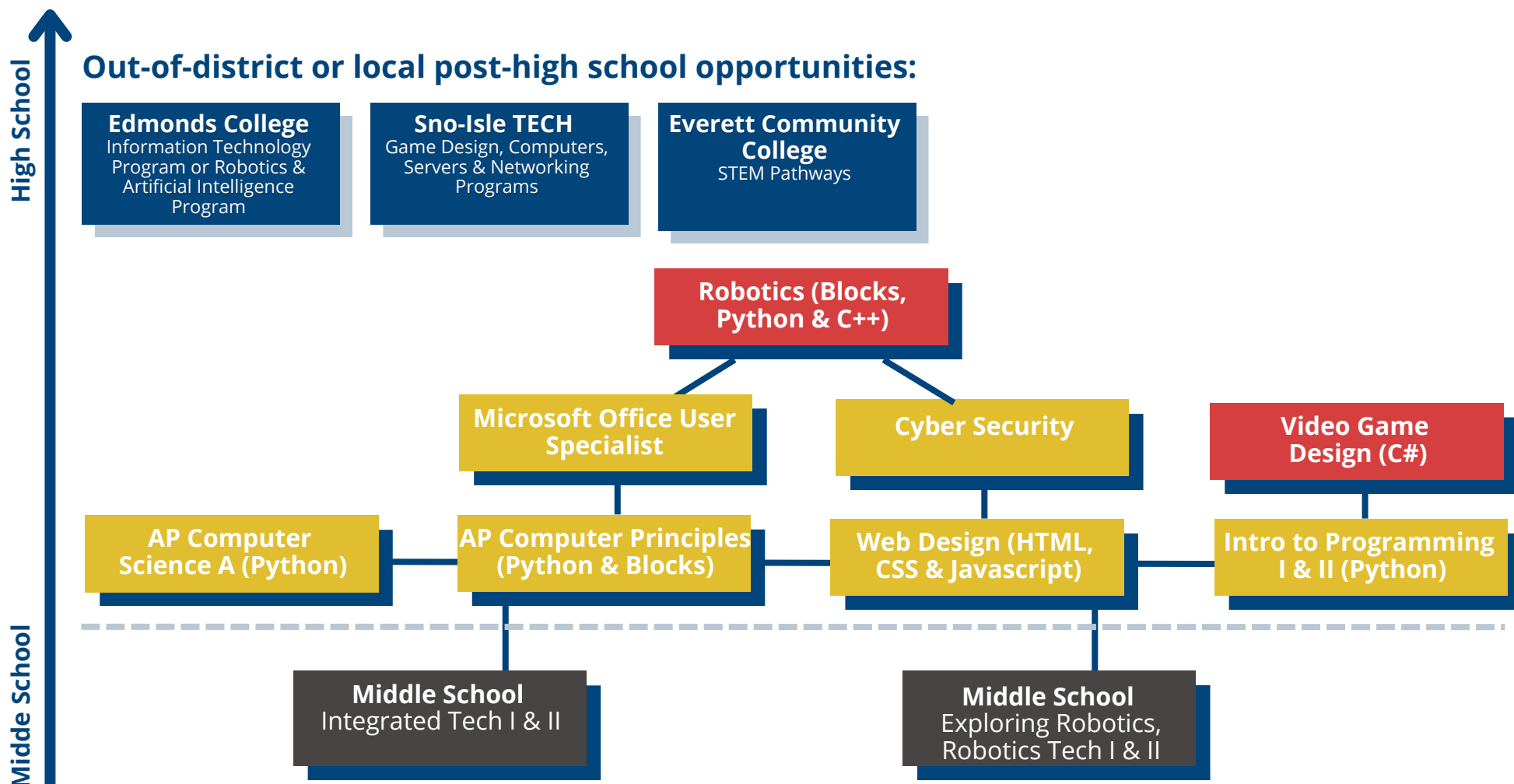
■ Business & Marketing

■ STEM

Career Connection Information Technology

Contains Courses from multiple CTE Pathways

In your High School & Beyond Plan, if you have selected a CTE graduation pathway, you must earn 2.0 credits in that pathway, which meets CTE math and ELA graduation requirements. Pathways are color coded; key is located at the bottom.



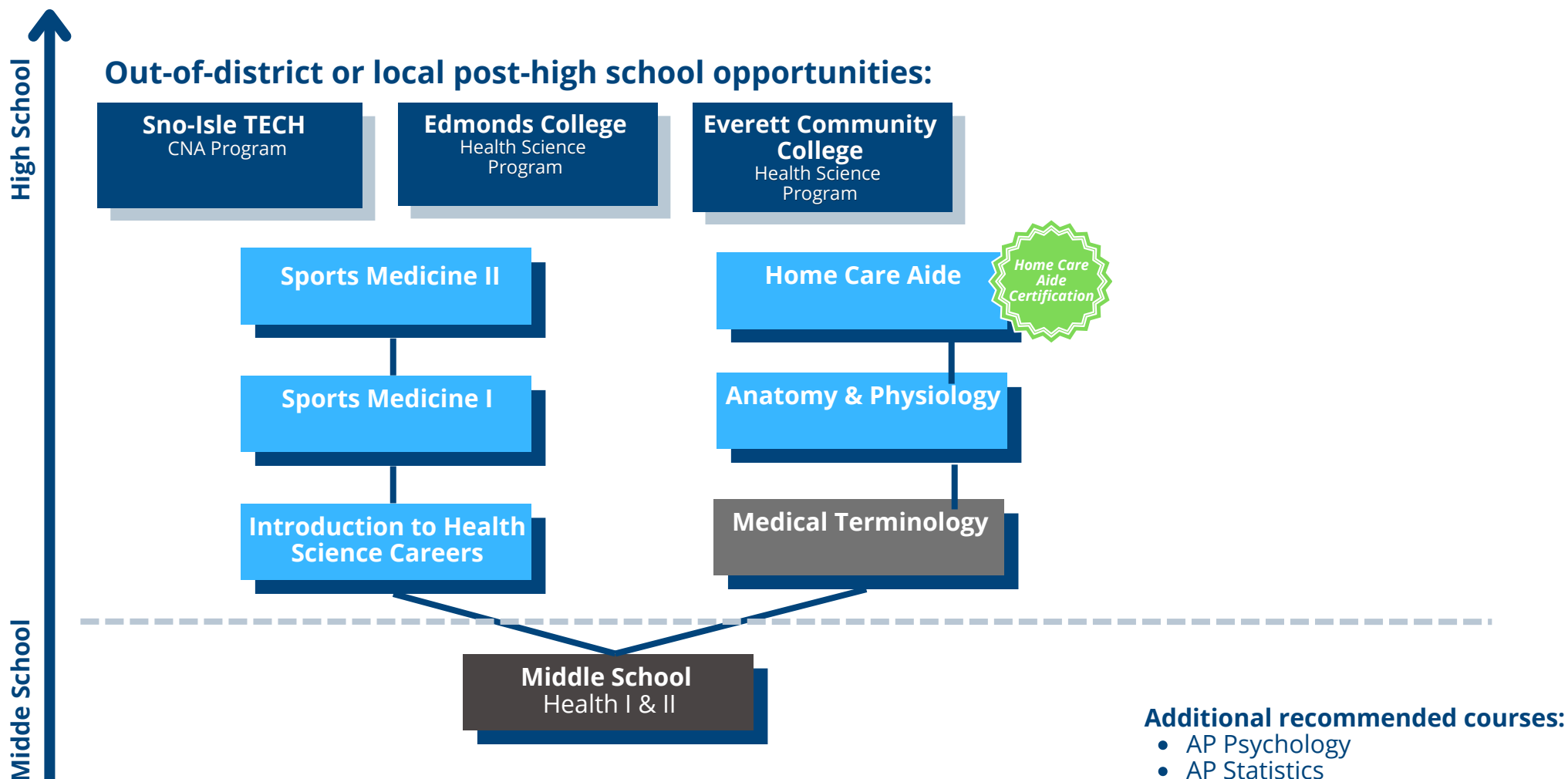
CTE Graduation Pathways Color Code



Career Connection Roadmap Patient Care

Contains Courses from multiple CTE Pathways

In your High School & Beyond Plan, if you have selected a CTE graduation pathway, you must earn 2.0 credits in that pathway, which meets CTE math and ELA graduation requirements. Pathways are color coded; key is located at the bottom.



CTE Graduation Pathways Color Code



Skilled & Technical Sciences



Family & Consumer Sciences



Agriculture Education & Science



Health Sciences



Business & Marketing

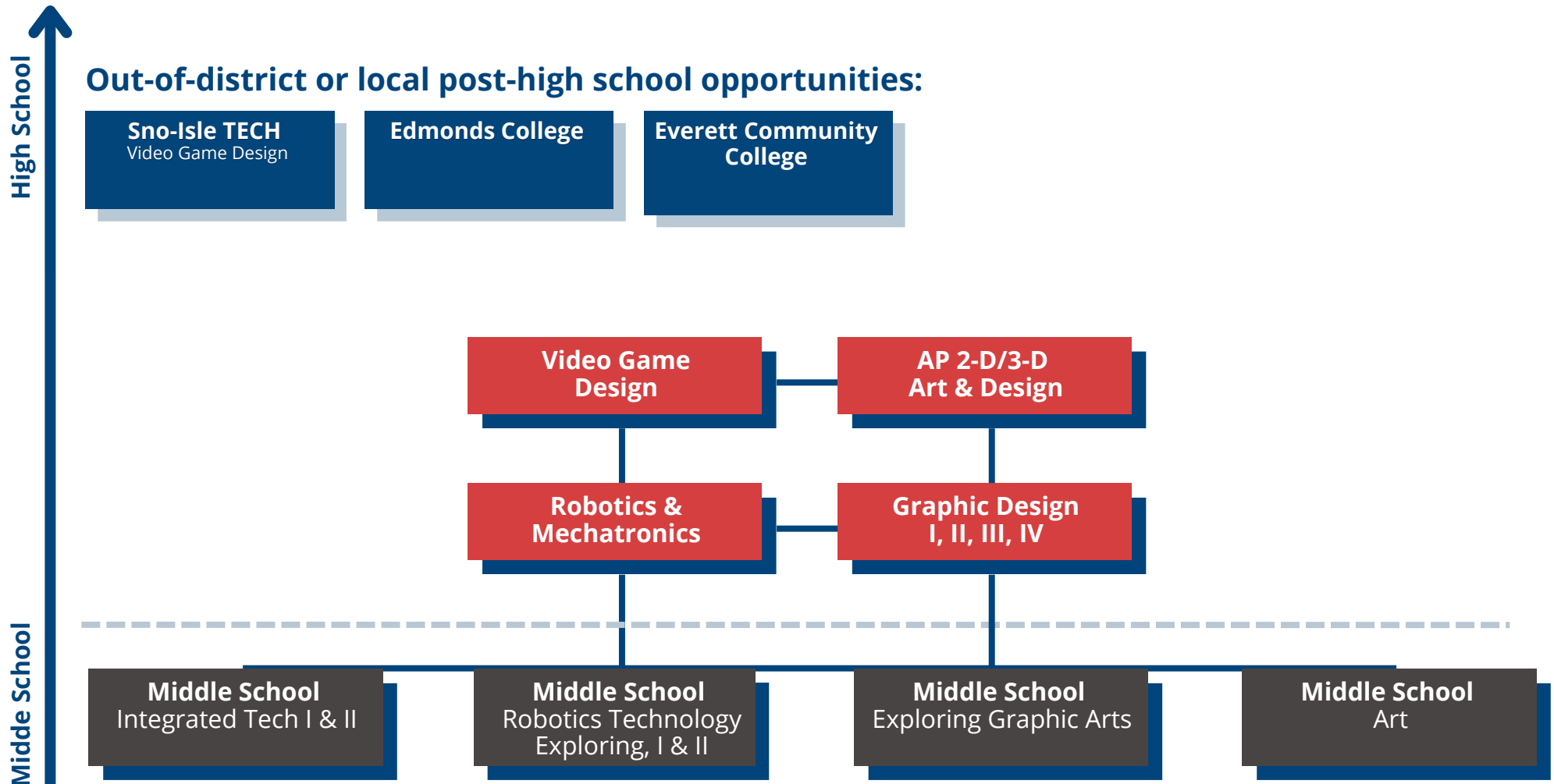


STEM

Career Connection Roadmap **Video Game Design**

Contains Courses from the Communication & Information Technology Roadmap

In your High School & Beyond Plan, if you have selected a CTE graduation pathway, you must earn 2.0 credits in that pathway, which meets CTE math and ELA graduation requirements. Pathways are color coded; key is located at the bottom.



CTE Graduation Pathways Color Code

■ Skilled & Technical Sciences

■ Family & Consumer Sciences

■ Agriculture Education & Science

■ Health Sciences

■ Business & Marketing

■ STEM

Everett Public Schools does not discriminate in any programs or activities on the basis of sex, race, creed, religion, color, national origin, age, veteran or military status, sexual orientation, gender expression or identity, disability, or the use of a trained dog guide or service animal and provides equal access to the Boy Scouts and other designated youth groups. The following employees have been designated to handle questions and complaints of alleged discrimination: Title IX/Civil Rights Compliance Officer: Kevin Allen, 425-385-4100, KAllen@everettsd.org, PO Box 2098, Everett WA 98213 Section 504 Coordinator: Dave Peters, 425-385-4063, DPeters@everettsd.org, PO Box 2098, Everett WA 98213 ADA Coordinator: Randi Seaberg, 425-385-4104, RSeaberg@everettsd.org, PO Box 2098, Everett WA 98213